

SSEF

SCHWEIZERISCHES GEMMOLOGISCHES INSTITUT
SWISS GEMMOLOGICAL INSTITUTE
INSTITUT SUISSE DE GEMMOLOGIE

GemTrack™



GemTrack™ | Documenting a gem from rough to cut to jewellery



What is GemTrack™ ?

A GemTrack™ document links a cut stone to a specific rough stone using gemmological techniques. GemTrack™ is based on a combination of crystallographic, structural, chemical and microscopic analyses that allow for detailed and potentially unique characterisation and fingerprinting of a rough stone. These same features are later investigated in the cut stone, following the cutting and polishing process. GemTrack™ is a SSEF document, which presents data of a specific stone in its rough and cut state, and is only issued in addition to a SSEF report for the cut stone. A GemTrack™ document may also be issued if a gem is later mounted in jewellery, in order to document the stone from rough to jewellery.

What claims does a GemTrack™ document make?

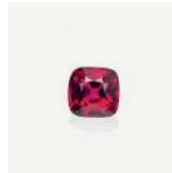
GemTrack™ provides expert scientific opinion linking a rough stone to a cut stone, thereby gemmologically documenting part of a stone's journey from mine to market. It does not make any specific claims of mine of origin. When credible documentation is provided (e.g. transparent sales receipts from a rough auction), a GemTrack™ document may state that based on provided documentation a gemstone was sourced from a specific company or auction.

SSEF GEMTRACK™ DOCUMENT



ROUGH RUBY
 Testing by SSEF

Date of Testing:	5 July 2018
Weight:	3.169 ct
Measurements:	10.20 x 7.60 x 6.10 mm



CUT RUBY
 Testing by SSEF (Report No. XXXXX)

Date of Testing:	28 August 2018
Weight:	1.525 ct
Measurements:	6.46 x 6.29 x 4.27 mm

TRACKING RECORD

- 1 Based on the provided documentation, the rough ruby (3.169 ct) described above was mined and recovered in Mozambique and sold at Gemfields auction in Singapore on the 9th of June 2018.
- 2 After the auction, the rough ruby was submitted to SSEF and meticulously analysed and characterised on the 5th of July 2018. The stone was then sent for cutting.
- 3 After cutting, the ruby (1.525 ct) was resubmitted to SSEF and extensively analysed on the 28th of August 2018.

Based on the consistency of the analysed properties and internal features of the described rough and cut ruby, it is the opinion of the SSEF that the ruby of 1.525 ct described in SSEF Gemstone Report No. XXXXX was cut from the 3.169 ct rough ruby, tested by SSEF before cutting.

Disclaimer: SSEF makes no warranty for the provided documentation and issues this GemTrack™ document based on provided information and within the limits of gemmological characterization of gemstones. Measurements and photos are approximate.

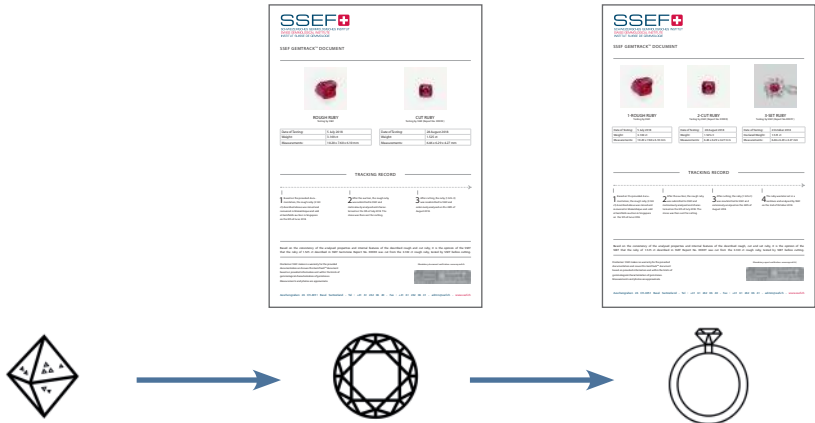
Mandatory document verification: www.myssef.ch



Aeschengraben 26 CH-4051 Basel Switzerland - Tel : +41 61 262 06 40 - Fax : +41 61 262 06 41 - admin@ssef.ch - www.ssef.ch

GemTrack™ document specimen for a ruby from rough to cut state.

What is the procedure for GemTrack™?



STEP 1: The rough gem is submitted to SSEF as a rough stone for detailed analysis along with available documentation. Important: the rough gem needs to have a polished window on one side. The rough stone is characterised in detail by SSEF, given a unique identifying number, and sent back to the client for cutting and polishing.

STEP 2: The client resubmits the cut stone with the unique identifying number. The cut stone is then meticulously analysed by SSEF a second time in order to confirm that it was cut from the rough stone that was previously submitted to SSEF. In the case where this data comparison is positive, SSEF will issue a GemTrack™ document in addition to the SSEF report for the same cut gemstone.

STEP 3 (optional): A GemTrack™ document may be updated at a later point in time, for example if the gem is recut again or even after having been mounted in jewellery, thus representing a unique and independent tracking record documenting the journey of a gemstone from rough to jewellery.

What is the price of GemTrack™ services?

- Cost of testing and full characterisation of the rough stone is 500 CHF.
- Cost of testing the cut gemstone is 500 CHF, in addition to the charge for the regular SSEF report. In this case a regular report and a GemTrack™ document will be issued for that stone.
- If the gemstone is later set in jewellery and thus submitted a third time, the update of the SSEF report and GemTrack™ document will cost 200 CHF + recheck fee.

Please visit www.ssef.ch/gemtrack or contact SSEF for more information.